



WHAT IS A TRAUMATIC BRAIN INJURY?

A TBI is a bump, blow or jolt to the head or a penetrating head injury that disrupts the normal function of the brain. In West Virginia, TBI also includes individuals who have anoxia due to near-drowning.

LEADING CAUSES OF TRAUMATIC BRAIN INJURY ACROSS ALL AGE GROUPS

- Falls: 41.3%
- Struck by/against events: 14.2%
- Motor vehicle crashes 12.2%
- Assault or homicide: 7.5%

(Taylor CA, Bell JM, Breiding MJ, Xu L., 2007/2013)

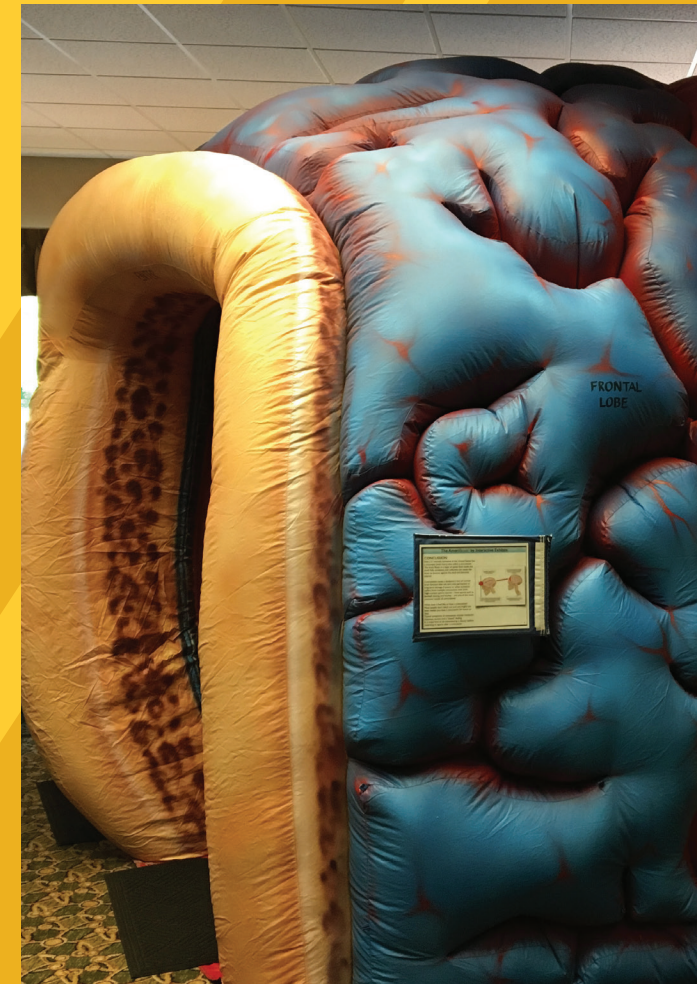
For active military personnel in war zones, blasts are the leading cause of TBI.
(Champion, Holcomb & Young, 2009)

TBI FACTS

- Severity may range from “mild” to “severe” based on the level of change to your mental status or consciousness.
- Estimates suggest that more than 23 million women in the US are living with a TBI from intimate partner violence.
(Ivany & Schminkey, 2016)
- Effects of TBI can include impaired thinking or memory, movement, sensation or emotional functioning.
- The effects of a TBI can be short-term or lifelong. These issues affect not only individuals but also families and communities.

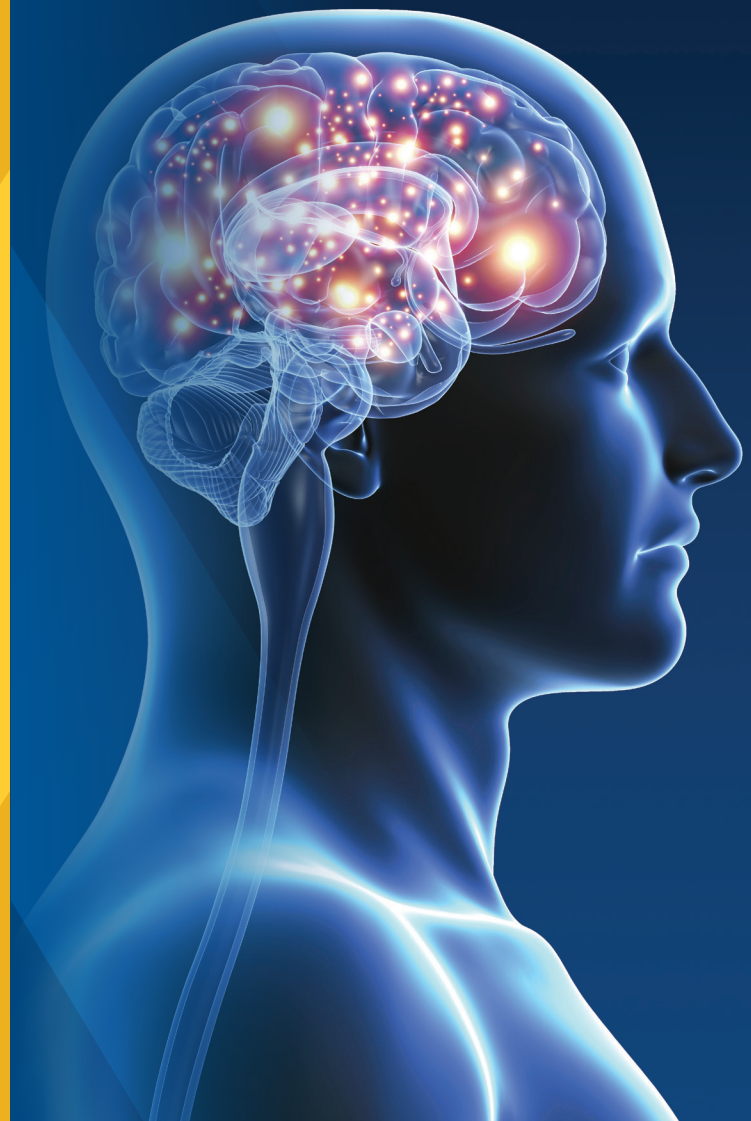
TECHNICAL ASSISTANCE

With the high prevalence of TBI in the country, it is critical to have a trained workforce that can identify and deliver appropriate services and support to individuals and families. Traumatic Brain Injury Services can provide technical assistance to agencies that request information or supports relating to TBI. We also offer the educational Big Brain for events. If you are interested in having the Big Brain at your event, visit our website for more information and to submit a request.



Traumatic Brain Injury Services

 West Virginia University
CENTER FOR EXCELLENCE IN DISABILITIES



Traumatic Brain Injury Services

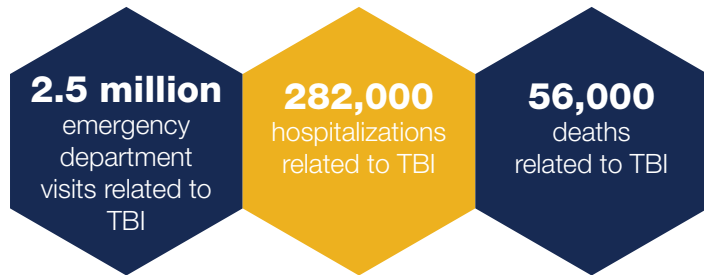
Center for Excellence in Disabilities
959 Hartman Run Road
Morgantown, WV 26505
Fax: 877-530-7734
Email: TBI@hsc.wvu.edu
Website: tbi.cedwvu.org

Toll free 877-724-8244

The Traumatic Brain Injury Services are supported in part by the West Virginia Department of Health and Human Resources, Bureau for Behavioral Health and Health Facilities and the U.S. Department of Health and Human Services, Administration For Community Living Grant Number 90TBSG0038-01-00. Grantees undertaking projects with government sponsorship are encouraged to express freely their findings and conclusions. Points of view or opinions do not, therefore, necessarily represent official ACL policy.

All printed materials are available in alternate formats upon request. WVU is an EEO/Affirmative Action Employer – Minority/Female/Disability/Veteran. 10/18

In 2017 the Centers for Disease Control and Prevention (CDC) reported:



Traumatic Brain Injury (TBI) Services

The WVU Center for Excellence in Disabilities is proud to serve as West Virginia's designated lead agency for coordination of services for West Virginians with TBI.

A variety of services and resources are offered through the program for individuals who have experienced a traumatic brain injury and their caregivers.

There are also opportunities for service providers from multiple backgrounds to gain a greater understanding of the needs and experiences of individuals with a TBI through training and technical assistance from our staff of Certified Brain Injury Specialists.

ELIGIBILITY FOR SERVICES

All services are free of charge to any one who:

- Is a current West Virginia resident
- Provides medical documentation of a traumatic brain injury (TBI)

RESOURCE COORDINATION & PATIENT NAVIGATION

Due to the complex nature of a TBI, navigating medical and social services can be difficult. TBI Services can help families and service providers identify and address issues of concern through person-centered planning and resource coordination.

Five social workers and two patient navigators are regionally located throughout the state of West Virginia. Each staff person is a highly trained brain injury specialist and has specific knowledge related to the resources located in their assigned region.

A social worker will be assigned once a referral has been made and required medical documentation has been received. They will make arrangements to meet in the most comfortable setting and begin working to aid the individual/family in creating a plan to increase independence, address any immediate needs and improve current quality of life.

NEUROPSYCHOLOGICAL EVALUATION

After a brain injury, an individual may experience issues with memory, cognitive function and other functional issues. Evaluations identify potential deficits and create a comprehensive plan of strategies to improve the quality of life.

The evaluation involves an interview and the administration of tests that can take 2-8 hours. The tests are typically pencil and paper type tests and can be adapted to an individual's need or ability.

Once eligibility is determined, a social worker can help determine if a neuropsychological evaluation may benefit a client in the functional aspects of their life. Licensed West Virginia professionals complete evaluations. Payment for services is provided through TBI Services, if applicable.



FINANCIAL ASSISTANCE

Funds for You is a limited funding program set up to provide goods or services that will increase the independence of people who have experienced a TBI. The West Virginia Department of Health and Human Resources, Bureau for Behavioral Health and Health Facilities funds the program fully.

PERMITTED GOODS AND SERVICES

- Medical/dental/vision services
- Adaptive equipment or assistive technology
- Home modifications
- Therapy services (physical, speech, cognitive and occupational)
- Other items to promote independence

PROCESS FOR APPLYING

This program is only available to current clients of TBI Services. The social worker assigned to each client will help complete the required application and will explain the additional documentation required to show all other funding options have been exhausted. Once the entire application is completed, an Application Review Team will meet and determine approval. For more information, please contact TBI Services.